



*B.F.E. s.r.l.*

*BONNEY FORGE*

GENERAL ASSEMBLED DRAWINGS  
WITH PART LIST

B.F.E. DOCUMENT No. **171798 -GAD**

CUSTOMER : **AL YASEAH OIL & GAS IND.SUPP.& SERV**

PROJECT : **STOCK**

P.O. No. **(AY/AR/STK001/17)**

B.F.E. IWO No. **171798**

COMPANY  
WITH  
QUALITY SYSTEM  
CERTIFIED ACC.TO  
= **ISO 9001** =



# GAD INDEX

|                                     |
|-------------------------------------|
| CUSTOMER NAME                       |
| AL YASEAH OIL & GAS IND.SUPP.& SERV |
| CUSTOMER PO NUMBER                  |
| (AY/AR/STK001/17)                   |
| CUSTOMER PROJECT ID                 |
| STOCK                               |

PLEASE RETURN THIS PAGE WITH THE STAU5 COLUMNS COMPILED WITHIN 15 DAYS

ISSUE DATE: 17/05/2017

| BFE ITEM | CUSTOMER ITEM | TAG NUMBER #1 | TAG NUMBER #2 | TAG NUMBER #3 | BFE GAD NUMBER       | CUSTOMER GAD NUMBER | QTY | STATUS APPROVED | STATUS APPROVED AS NOTED | REJECTED | NOTE | REFERENCE CUSTOMER PO NUMBER |
|----------|---------------|---------------|---------------|---------------|----------------------|---------------------|-----|-----------------|--------------------------|----------|------|------------------------------|
| 001      | 001           |               |               |               | A01BF08A3W171798001A |                     | 25  |                 |                          |          |      |                              |
| 002      | 002           |               |               |               | A01BF08A3W171798001A |                     | 25  |                 |                          |          |      |                              |
| 003      | 003           |               |               |               | A01BF08A3W171798001A |                     | 25  |                 |                          |          |      |                              |
| 004      | 004           |               |               |               | A01BF08A3W171798001A |                     | 10  |                 |                          |          |      |                              |
| 005      | 005           |               |               |               | A01BF08A8W171798005A |                     | 20  |                 |                          |          |      |                              |
| 006      | 006           |               |               |               | A01BF03R3W171798006A |                     | 20  |                 |                          |          |      |                              |
| 007      | 007           |               |               |               | A01BF03R3W171798006A |                     | 25  |                 |                          |          |      |                              |
| 008      | 008           |               |               |               | A01BF03R3W171798006A |                     | 25  |                 |                          |          |      |                              |
| 009      | 009           |               |               |               | A01BF03R3W171798006A |                     | 10  |                 |                          |          |      |                              |
| 010      | 010           |               |               |               | A01BF03R3W171798006A |                     | 10  |                 |                          |          |      |                              |
| 011      | 011           |               |               |               | HL-100-001           |                     | 20  |                 |                          |          |      |                              |
| 012      | 012           |               |               |               | HL-100-001           |                     | 50  |                 |                          |          |      |                              |
| 013      | 013           |               |               |               | HL-100-002           |                     | 30  |                 |                          |          |      |                              |
| 014      | 014           |               |               |               | HL-100-001           |                     | 10  |                 |                          |          |      |                              |
| 015      | 015           |               |               |               | 9HL-100-003          |                     | 5   |                 |                          |          |      |                              |
| 016      | 016           |               |               |               | 9HL-100-003          |                     | 5   |                 |                          |          |      |                              |
| 017      | 017           |               |               |               | 9HL-100-003          |                     | 5   |                 |                          |          |      |                              |
| 018      | 018           |               |               |               | 9HL-100-003          |                     | 5   |                 |                          |          |      |                              |
| 019      | 019           |               |               |               | 9HL-100-003          |                     | 2   |                 |                          |          |      |                              |
| 020      | 020           |               |               |               | HL-300-004           |                     | 20  |                 |                          |          |      |                              |
| 021      | 021           |               |               |               | HL-300-004           |                     | 20  |                 |                          |          |      |                              |
| 022      | 022           |               |               |               | HL-300-004           |                     | 10  |                 |                          |          |      |                              |
| 023      | 023           |               |               |               | HL-300-004           |                     | 5   |                 |                          |          |      |                              |
| 024      | 024           |               |               |               | HL-300-004           |                     | 5   |                 |                          |          |      |                              |
| 025      | 025           |               |               |               | 9HL-300-005          |                     | 5   |                 |                          |          |      |                              |
| 026      | 026           |               |               |               | 9HL-300-005          |                     | 5   |                 |                          |          |      |                              |
| 027      | 027           |               |               |               | 9HL-300-005          |                     | 5   |                 |                          |          |      |                              |
| 028      | 028           |               |               |               | 9HL-300-005          |                     | 2   |                 |                          |          |      |                              |
| 029      | 029           |               |               |               | HL-400-006           |                     | 5   |                 |                          |          |      |                              |
| 030      | 030           |               |               |               | HL-400-006           |                     | 10  |                 |                          |          |      |                              |
| 031      | 031           |               |               |               | HL-400-006           |                     | 5   |                 |                          |          |      |                              |
| 032      | 034           |               |               |               | HL-600-007           |                     | 10  |                 |                          |          |      |                              |
| 033      | 036           |               |               |               | HL-600-007           |                     | 5   |                 |                          |          |      |                              |
| 034      | 037           |               |               |               | HL-600-007           |                     | 5   |                 |                          |          |      |                              |
| 035      | 040           |               |               |               | 9HL-600-008          |                     | 2   |                 |                          |          |      |                              |
| 036      | 041           |               |               |               | 9HL-600-008          |                     | 2   |                 |                          |          |      |                              |
| 037      | 042           |               |               |               | 9HL-600-008          |                     | 2   |                 |                          |          |      |                              |
| 038      | 043           |               |               |               | HL-100-009           |                     | 10  |                 |                          |          |      |                              |
| 039      | 044           |               |               |               | HL-100-009           |                     | 20  |                 |                          |          |      |                              |
| 040      | 001           |               |               |               | L1-100-010           |                     | 5   |                 |                          |          |      |                              |
| 041      | 002           |               |               |               | L1-100-010           |                     | 5   |                 |                          |          |      |                              |
| 042      | 003           |               |               |               | L1-100-010           |                     | 5   |                 |                          |          |      |                              |
| 043      | 004           |               |               |               | L1-100-010           |                     | 5   |                 |                          |          |      |                              |



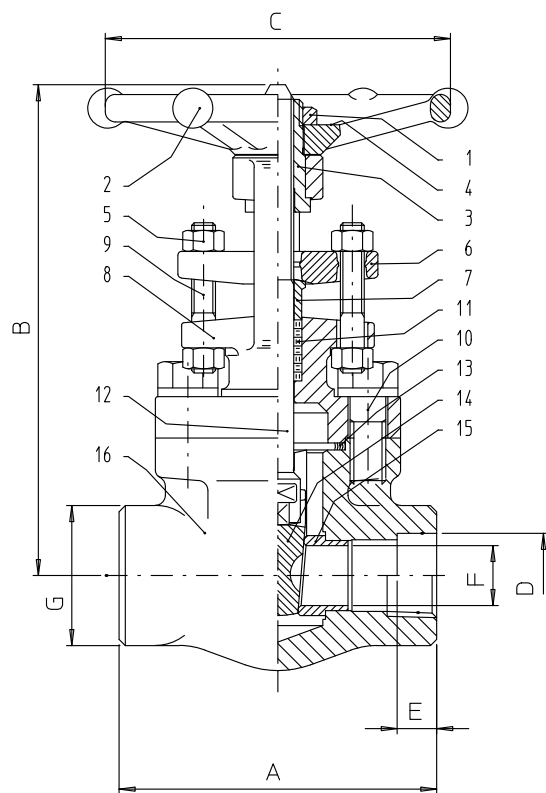
# GAD INDEX

|                                     |
|-------------------------------------|
| CUSTOMER NAME                       |
| AL YASEAH OIL & GAS IND.SUPP.& SERV |
| CUSTOMER PO NUMBER                  |
| (AY/AR/STK001/17)                   |
| CUSTOMER PROJECT ID                 |
| STOCK                               |

PLEASE RETURN THIS PAGE WITH THE STAUUS COLUMNS COMPILED WITHIN 15 DAYS

ISSUE DATE: 17/05/2017

| BFE ITEM | CUSTOMER ITEM | TAG NUMBER #1 | TAG NUMBER #2 | TAG NUMBER #3 | BFE GAD NUMBER | CUSTOMER GAD NUMBER | QTY | STATUS APPROVED | STATUS APPROVED AS NOTED | REJECTED | NOTE | REFERENCE CUSTOMER PO NUMBER |
|----------|---------------|---------------|---------------|---------------|----------------|---------------------|-----|-----------------|--------------------------|----------|------|------------------------------|
| 044      | 005           |               |               |               | L1-100-010     |                     | 5   |                 |                          |          |      |                              |
| 045      | 006           |               |               |               | L1-300-011     |                     | 5   |                 |                          |          |      |                              |
| 046      | 007           |               |               |               | L1-300-011     |                     | 5   |                 |                          |          |      |                              |
| 047      | 008           |               |               |               | L1-300-011     |                     | 5   |                 |                          |          |      |                              |
| 048      | 009           |               |               |               | L1-300-011     |                     | 5   |                 |                          |          |      |                              |
| 049      | 010           |               |               |               | L1-300-011     |                     | 5   |                 |                          |          |      |                              |
| 050      | 013           |               |               |               | L1-600-012     |                     | 5   |                 |                          |          |      |                              |
| 051      | 014           |               |               |               | L1-600-012     |                     | 5   |                 |                          |          |      |                              |
| 052      | 015           |               |               |               | L1-600-012     |                     | 5   |                 |                          |          |      |                              |
| 053      | 016           |               |               |               | L3-100-013     |                     | 5   |                 |                          |          |      |                              |
| 054      | 017           |               |               |               | L3-100-013     |                     | 5   |                 |                          |          |      |                              |
| 055      | 018           |               |               |               | L3-100-013     |                     | 5   |                 |                          |          |      |                              |
| 056      | 019           |               |               |               | L3-100-013     |                     | 5   |                 |                          |          |      |                              |
| 057      | 020           |               |               |               | L3-100-013     |                     | 5   |                 |                          |          |      |                              |
| 058      | 021           |               |               |               | L3-300-014     |                     | 5   |                 |                          |          |      |                              |
| 059      | 022           |               |               |               | L3-300-014     |                     | 5   |                 |                          |          |      |                              |
| 060      | 023           |               |               |               | L3-300-014     |                     | 5   |                 |                          |          |      |                              |
| 061      | 024           |               |               |               | L3-300-014     |                     | 5   |                 |                          |          |      |                              |
| 062      | 025           |               |               |               | L3-300-014     |                     | 5   |                 |                          |          |      |                              |
| 063      | 029           |               |               |               | L3-600-015     |                     | 5   |                 |                          |          |      |                              |
| 064      | 030           |               |               |               | L3-600-015     |                     | 5   |                 |                          |          |      |                              |



| POS | PART NAME                                    | MATERIAL             |
|-----|--|----------------------|
| 1   | Dado volante<br>HANDWHEEL NUT                | A563 GR.A BZP        |
| 2   | Volantino<br>HANDWHEEL                       | ASTM A105            |
| 3   | Madrevite<br>YOKE SLEEVE                     | A582 TP416 TEMP.     |
| 4   | Targhetta<br>NAME PLATE                      | ALUMINIUM            |
| 5   | Dado premitreccia<br>GLAND NUTS              | ASTM A194 2HM        |
| 6   | Flangia premitrecc.<br>GLAND FLANGE          | ASTM A105            |
| 7   | Premitreccia<br>PACKING GLAND                | ASTM A182 F316/F316L |
| 8   | Coperchio<br>BONNET                          | ASTM A105N           |
| 9   | Tiranti premitreccia<br>GLAND STUDS          | ASTM A193 B7M        |
| 10  | Vite testa esagonale<br>HEXAGONAL HEAD SCREW | ASTM A193 B7M        |
| 11  | Baderna<br>PACKING                           | GRAPHITE ECO-SEAL    |
| 12  | Stelo<br>STEM                                | ASTM A182 F6A        |
| 13  | Guarnizione spirale<br>SPW GASKET            | F316L + GRAPHITE     |
| 14  | Otturatore<br>WEDGE                          | ASTM A182 F6A NACE   |
| 15  | Seggio<br>SEAT RINGS                         | A182 F6A+ST.6        |
| 16  | Corpo<br>BODY                                | ASTM A105N           |

NOTES:  
-ALL DIMENSIONS ARE IN mm

( ) SOCKET WELDING ENDS ACCORDING TO ANSI B16.11  
(X) SCREWED ENDS ACCORDING TO ANSI B1.20.1 (NPT)

VALVES MATERIALS ACC. TO ISO 15156/NACE MR.0175 ED. 2009, NACE MR.0103 ED. 2012.

| SIZE       | 1/2"   | 3/4"   | 1"     | 1.1/2" | 2"     | 2.1/2" | 3"      |
|------------|--------|--------|--------|--------|--------|--------|---------|
| A          | 80     | 90     | 110    | 127    | 134    | 216    | 225     |
| B open     | 152    | 158    | 196    | 255    | 270    | 330    | 330     |
| C          | 88     | 88     | 97     | 138    | 138    | 172    | 172     |
| D          | 21.7   | 27.1   | 33.8   | 48.6   | 61.1   | 73.9   | 89.8    |
| E          | 12.7   | 14.3   | 15.8   | 19     | 22.2   | 16     | 16      |
| F          | 9.6    | 14     | 18     | 30     | 36.6   | 48     | 48      |
| G          | 32     | 38     | 48     | 64     | 78     | 118    | 100     |
| WEIGHT kg~ | 1.9    | 2.3    | 3.6    | 7.3    | 7.5    | 13     | 15      |
| FIGURE N°  | HL 103 | HL 104 | HL 105 | HL 107 | HL 108 | HL 109 | HL 1010 |
| ITEM       | 011    |        |        | 014    |        |        |         |



B.F.E. s.r.l.  
BONNEY FORGE  
CUSTOMER : AL YASEAH OIL & GAS IND.SUPP.& SERV  
P.O. NUMBER : (AY/AR/STK001/17)  
TAG NR :  
BFE JOB NR : 171798

Draw.: M.Teli  
Appr.: P.Gargiulo  
Revisions

26.4.95  
26.4.95

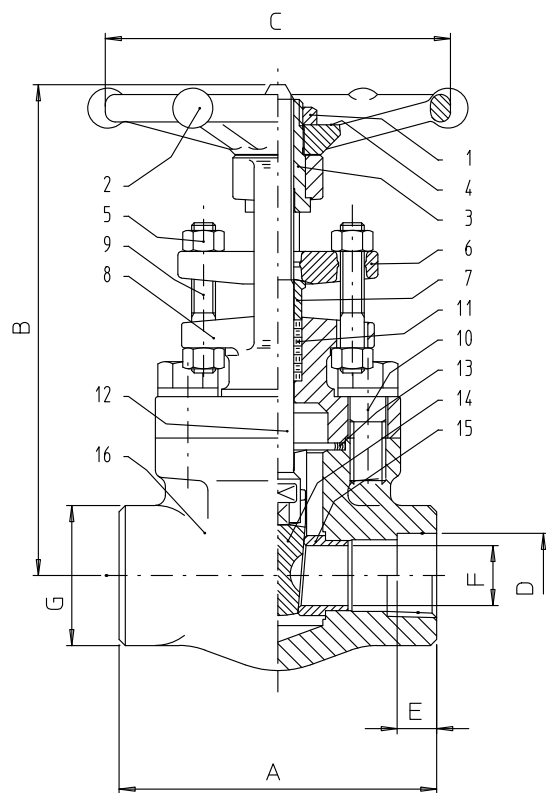
COMPANY  
WITH QUALITY  
MANAGEMENT  
CERTIFIED ACC.TO  
ISO 9001:2008

Title : GATE VALVE B.B. O.S. & Y  
CLASS 800 lbs - REDUCED BORE

Reference  
specification  
API 602  
EN ISO  
15781

Drawing N° :  
HL 100 | 001

THIS DRAWING IS B.F.E. S.r.l. PROPERTY, REPRODUCTION IS STRICTLY PROHIBITED



| POS | PART NAME                                    | MATERIAL             |
|-----|--|----------------------|
| 1   | Dado volante<br>HANDWHEEL NUT                | A563 GR.A BZP        |
| 2   | Volantino<br>HANDWHEEL                       | ASTM A105            |
| 3   | Madrevite<br>YOKE SLEEVE                     | A582 TP416 TEMP.     |
| 4   | Targhetta<br>NAME PLATE                      | ALUMINIUM            |
| 5   | Dado premitreccia<br>GLAND NUTS              | ASTM A194 2HM        |
| 6   | Flangia premitrecc.<br>GLAND FLANGE          | ASTM A105            |
| 7   | Premitreccia<br>PACKING GLAND                | ASTM A182 F316/F316L |
| 8   | Coperchio<br>BONNET                          | ASTM A105N           |
| 9   | Tiranti premitreccia<br>GLAND STUDS          | ASTM A193 B7M        |
| 10  | Vite testa esagonale<br>HEXAGONAL HEAD SCREW | ASTM A193 B7M        |
| 11  | Baderna<br>PACKING                           | GRAPHITE ECO-SEAL    |
| 12  | Stelo<br>STEM                                | ASTM A182 F6A        |
| 13  | Guarnizione spirale<br>SPW GASKET            | F316L + GRAPHITE     |
| 14  | Otturatore<br>WEDGE                          | ASTM A182 F6A NACE   |
| 15  | Seggio<br>SEAT RINGS                         | A182 F6A+ST.6        |
| 16  | Corpo<br>BODY                                | ASTM A105N           |

NOTES:  
-ALL DIMENSIONS ARE IN mm

X SOCKET WELDING ENDS ACCORDING TO ANSI B16.11  
[] SCREWED ENDS ACCORDING TO ANSI B1.20.1 (NPT)

VALVES MATERIALS ACC. TO ISO 15156/NACE MR.0175 ED. 2009, NACE MR.0103 ED. 2012.

| SIZE       | 1/2"   | 3/4"   | 1"     | 1.1/2" | 2"     | 2.1/2" | 3"      |
|------------|--------|--------|--------|--------|--------|--------|---------|
| A          | 80     | 90     | 110    | 127    | 134    | 216    | 225     |
| B open     | 152    | 158    | 196    | 255    | 270    | 330    | 330     |
| C          | 88     | 88     | 97     | 138    | 138    | 172    | 172     |
| D          | 21.7   | 27.1   | 33.8   | 48.6   | 61.1   | 73.9   | 89.8    |
| E          | 12.7   | 14.3   | 15.8   | 19     | 22.2   | 16     | 16      |
| F          | 9.6    | 14     | 18     | 30     | 36.6   | 48     | 48      |
| G          | 32     | 38     | 48     | 64     | 78     | 118    | 100     |
| WEIGHT kg~ | 1.9    | 2.3    | 3.6    | 7.3    | 7.5    | 13     | 15      |
| FIGURE N°  | HL 103 | HL 104 | HL 105 | HL 107 | HL 108 | HL 109 | HL 1010 |
| ITEM       | 013    |        |        |        |        |        |         |



B.F.E. s.r.l.  
BONNEY FORGE

Draw.: M.Teli  
Appr.: P.Gargiulo

26.4.95  
26.4.95

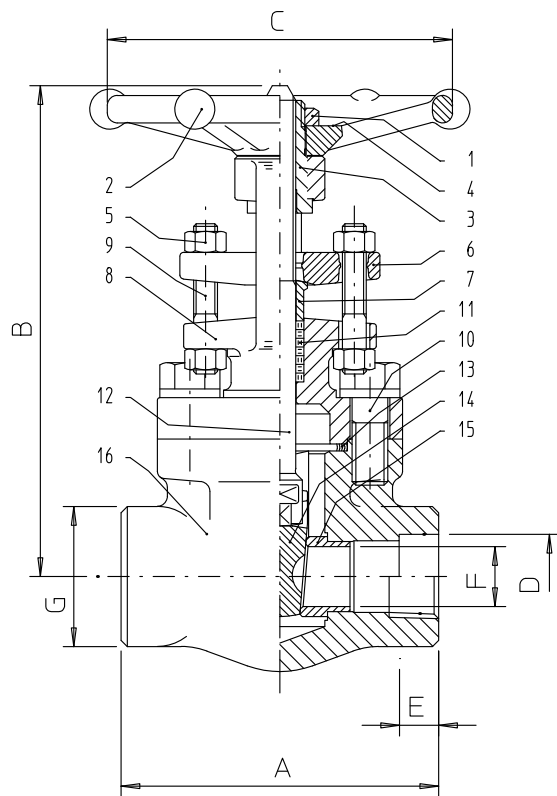
COMPANY  
WITH QUALITY  
MANAGEMENT  
CERTIFIED ACC.TO  
ISO 9001:2008

Title :  
GATE VALVE B.B. O.S. & Y  
CLASS 800 lbs - REDUCED BORE

Reference  
specification  
API 602  
EN ISO  
15781

Drawing N°:  
HL 100 | 002

CUSTOMER : AL YASEAH OIL & GAS IND.SUPP.& SERV  
P.O. NUMBER : (AY/AR/STK001/17)  
TAG NR :  
BFE JOB NR : 171798



| POS | PART NAME                           | MATERIAL             |
|-----|-------------------------------------|----------------------|
| 1   | Dado volante<br>HANDWHEEL NUT       | A563 GR.A BZP        |
| 2   | Volantino<br>HANDWHEEL              | ASTM A105            |
| 3   | Madrevite<br>YOKE SLEEVE            | A582 TP416 TEMP.     |
| 4   | Targhetta<br>NAME PLATE             | ALUMINIUM            |
| 5   | Dado premitreccia<br>GLAND NUTS     | ASTM A194 2HM        |
| 6   | Flangia premitrec.<br>GLAND FLANGE  | ASTM A105            |
| 7   | Premitreccia<br>PACKING GLAND       | ASTM A182 F316/F316L |
| 8   | Coperchio<br>BONNET                 | ASTM A105N           |
| 9   | Tiranti premitreccia<br>GLAND STUDS | ASTM A193 B7M        |
| 10  | Bulloni C/C<br>B/B BOLTS            | ASTM A193 B7M        |
| 11  | Baderna<br>PACKING                  | GRAPHITE ECO-SEAL    |
| 12  | Stelo<br>STEM                       | ASTM A182 F6A        |
| 13  | Guarnizione spirale<br>SPW GASKET   | F316L + GRAPHITE     |
| 14  | Otturatore solido<br>SOLID WEDGE    | ASTM A182 F6A NACE   |
| 15  | Seggio<br>SEAT RINGS                | A182 F6A+ST.6        |
| 16  | Corpo<br>BODY                       | ASTM A105N           |

NOTES:  
-ALL DIMENSIONS ARE IN mm

[ ] SOCKET WELDING ENDS ACCORDING TO ANSI B16.11  
 X SCREWED ENDS ACCORDING TO ANSI B1.20.1 (NPT)

VALVES MATERIALS ACC. TO ISO 15156/NACE MR.0175 ED. 2009, NACE MR.0103 ED. 2012.

| SIZE       | 1/2"    | 3/4"    | 1"      | 1.1/2"  | 2"     |
|------------|---------|---------|---------|---------|--------|
| A          | 90      | 110     | 127     | 127     | 210    |
| B open     | 152     | 190     | 220     | 282     | 345    |
| C          | 88      | 97      | 138     | 138     | 172    |
| D          | 21,7    | 27,1    | 33,8    | 48,6    | 61,1   |
| E          | 12,7    | 14,3    | 15,8    | 19      | 22,2   |
| F          | 9,6     | 14      | 18      | 30      | 36,6   |
| G          | 38      | 48      | 56      | 78      | 85     |
| WEIGHT kg~ | 2,4     | 3,9     | 6,1     | 10,8    | 14,2   |
| FIGURE N°  | 9HL 103 | 9HL 104 | 9HL 105 | 9HL 107 | 9HL 10 |
| ITEM       | 015     | 016     | 017     | 018     | 019    |



B.F.E. s.r.l.  
BONNEY FORGE

|           |            |         |
|-----------|------------|---------|
| Draw.:    | M.Teli     | 21.3.95 |
| Appr.:    | P.Gargiulo | 21.3.95 |
| Revisions |            |         |

COMPANY  
WITH QUALITY  
MANAGEMENT  
CERTIFIED ACC.TO  
ISO 9001:2008

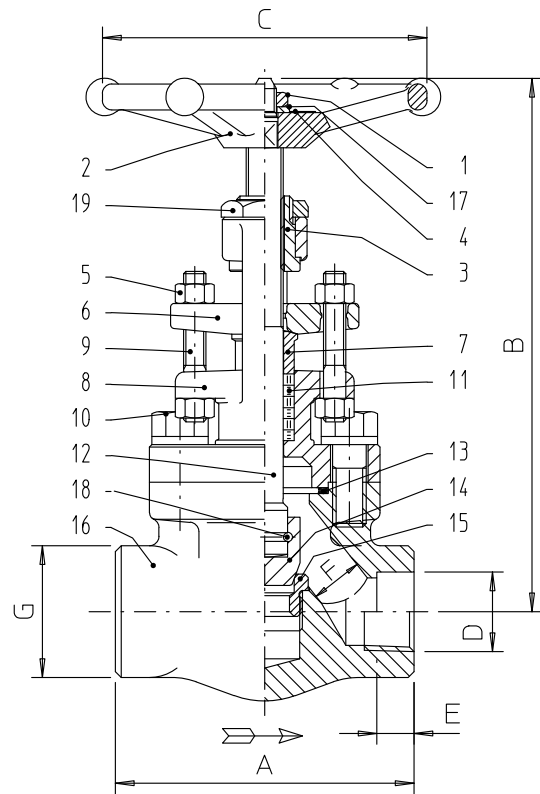
Title : GATE VALVE B.B. O.S. & Y  
CLASS 1500 lbs - REDUCED BORE

Reference  
specification  
**API 602**

Drawing N° :  
**9HL 100 | 003**

CUSTOMER : AL YASEAH OIL & GAS IND.SUPP.& SERV  
P.O. NUMBER : (AY/AR/STK001/17)  
TAG NR :  
BFE JOB NR : 171798

THIS DRAWING IS B.F.E. S.r.l. PROPERTY. REPRODUCTION IS STRICTLY PROHIBITED



[ ] SOCKET WELDING ENDS ACCORDING TO ANSI B16.11  
 X SCREWED ENDS ACCORDING TO ANSI B1.20.1 (NPT)

VALVES MATERIALS ACC. TO ISO 15156/NACE MR.0175 ED. 2009, NACE MR.0103 ED. 2012.

| POS | PART NAME                                    | MATERIAL             |
|-----|--|----------------------|
| 1   | Dado volante<br>HANDWHEEL NUT                | ASTM A307 GR.B       |
| 2   | Volante<br>HANDWHEEL                         | ASTM A105            |
| 3   | Madrevite<br>YOKE SLEEVE                     | ASTM A582 TP416      |
| 4   | Targhetta<br>NAME PLATE                      | ALUMINIUM            |
| 5   | Dado premitreccia<br>GLAND NUTS              | ASTM A194 2HM        |
| 6   | Flangia premitreccia<br>GLAND FLANGE         | ASTM A105            |
| 7   | Premitreccia<br>PACKING GLAND                | ASTM A182 F316/F316L |
| 8   | coperchio<br>BONNET                          | ASTM A105N           |
| 9   | Tiranti premitreccia<br>GLAND STUDS          | ASTM A193 B7M        |
| 10  | Viti testa esagonale<br>HEXAGONAL HEAD SCREW | ASTM A193 B7M        |
| 11  | Baderna<br>PACKING                           | GRAPHITE ECO-SEAL    |
| 12  | Stelo<br>STEM                                | ASTM A182 F6A        |
| 13  | Guarnizione spirale<br>SPW GASKET            | F316L + GRAPHITE     |
| 14  | Otturatore<br>DISC                           | ASTM A479 410 NACE   |
| 15  | Seggio<br>SEAT RING                          | A182 F6A+ST.6        |
| 16  | Corpo<br>BODY                                | ASTM A105N           |
| 17  | Rondella<br>WASHER                           | ASTM A105N/GALVAN.   |
| 18  | Filo di giunzione<br>CONNECTION WIRE         | ASTM A182 F316/F316L |
| 19  | Dado madrevite<br>YOKE NUT                   | A563 GR.A BZP        |

NOTES:  
 -ALL DIMENSIONS ARE IN mm

THIS DRAWING IS B.F.E. S.r.l. PROPERTY. REPRODUCTION IS STRICTLY PROHIBITED

| SIZE        | 1/2"   | 3/4"   | 1"     | 1.1/2" | 2"     |
|-------------|--------|--------|--------|--------|--------|
| A           | 80     | 90     | 110    | 150    | 180    |
| B open      | 166    | 171    | 213    | 258    | 300    |
| C           | 88     | 88     | 97     | 138    | 172    |
| D           | 21,7   | 27,1   | 33,8   | 48,6   | 61,1   |
| E           | 12,7   | 14,3   | 15,8   | 19     | 22,2   |
| F           | 9      | 13     | 17,5   | 29,5   | 35     |
| G           | 32     | 38     | 48     | 64     | 78     |
| WEIGHT kg ~ | 2,1    | 2,3    | 3,7    | 7,4    | 11,9   |
| FIGURE N°   | HL 303 | HL 304 | HL 305 | HL 307 | HL 308 |
| ITEM        | 020    | 021    | 022    | 023    | 024    |



B.F.E. S.r.l.  
 BONNEY FORGE

Draw.: M.Teti 26.4.95  
 Appr.: P.Gargiulo 26.4.95  
 Revisions

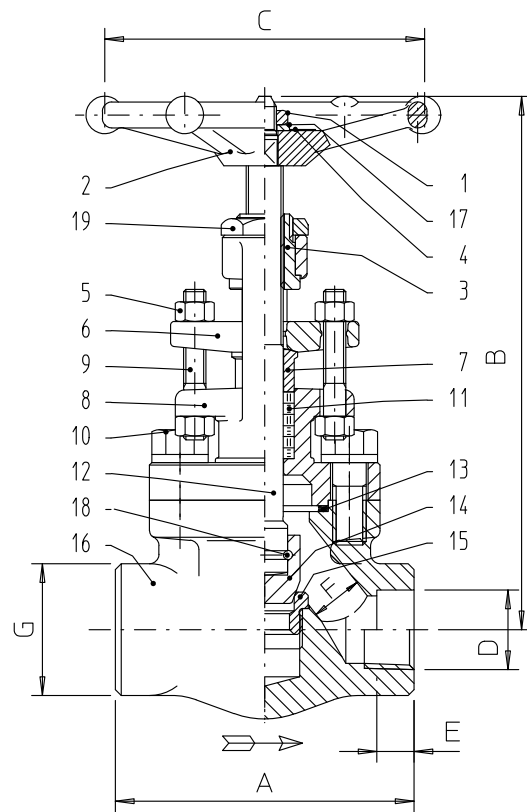
COMPANY  
 WITH QUALITY  
 MANAGEMENT  
 CERTIFIED ACC.TO  
 ISO 9001:2008

Title : GLOBE VALVE B.B. O.S. & Y  
 CLASS 800 lbs - REDUCED BORE

Reference  
 specification  
**EN ISO  
 15781**

Drawing N°:  
**HL 300 | 004**

CUSTOMER : AL YASEAH OIL & GAS IND.SUPP.& SERV  
 P.O. NUMBER : (AY/AR/STK001/17)  
 TAG NR :  
 BFE JOB NR : 171798



[ ] SOCKET WELDING ENDS ACCORDING TO ANSI B16.1  
 X SCREWED ENDS ACCORDING TO ANSI B1.20.1 (INPT)

VALVES MATERIALS ACC. TO ISO 15156/NACE MR.0175 ED. 2009, NACE MR.0103 ED. 2012.

| POS | PART NAME                            | MATERIAL             |
|-----|--------------------------------------|----------------------|
| 1   | Dado volante<br>HANDWHEEL NUT        | ASTM A307 GR.B       |
| 2   | Volante<br>HANDWHEEL                 | ASTM A105            |
| 3   | Madrevite<br>YOKE SLEEVE             | ASTM A582 TP416      |
| 4   | Targhetta<br>NAME PLATE              | ALUMINIUM            |
| 5   | Dado premitreccia<br>GLAND NUTS      | ASTM A194 2HM        |
| 6   | Flangia premitreccia<br>GLAND FLANGE | ASTM A105            |
| 7   | Premitreccia<br>PACKING GLAND        | ASTM A182 F316/F316L |
| 8   | coperchio<br>BONNET                  | ASTM A105N           |
| 9   | Tiranti premitreccia<br>GLAND STUDS  | ASTM A193 B7M        |
| 10  | Bulloni C/C<br>B/B BOLTS             | ASTM A193 B7M        |
| 11  | Baderna<br>PACKING                   | GRAPHITE ECO-SEAL    |
| 12  | Stelo<br>STEM                        | ASTM A182 F6A        |
| 13  | Guarnizione C/C<br>B/B GASKET        | F316L + GRAPHITE     |
| 14  | Otturatore<br>DISC                   | ASTM A479 410 NACE   |
| 15  | Seggio<br>SEAT RING                  | A182 F6A+ST.6        |
| 16  | Corpo<br>BODY                        | ASTM A105N           |
| 17  | Rondella<br>WASHER                   | ASTM A105N/GALVAN.   |
| 18  | Filo di giunzione<br>CONNECTION WIRE | ASTM A182 F316/F316L |
| 19  | Dado madrevite<br>YOKE NUT           | A563 GR.A BZP        |

NOTES:  
 -ALL DIMENSIONS ARE IN mm

THIS DRAWING IS B.F.E. S.r.l. PROPERTY. REPRODUCTION IS STRICTLY PROHIBITED

| SIZE        | 1/2"    | 3/4"    | 1"      | 1.1/2"  | 2"     |
|-------------|---------|---------|---------|---------|--------|
| A           | 90      | 110     | 127     | 180     | 210    |
| B open      | 166     | 210     | 250     | 300     | 375    |
| C           | 88      | 97      | 138     | 172     | 172    |
| D           | 21,7    | 27,1    | 33,8    | 48,6    | 61,1   |
| E           | 12,7    | 14,3    | 15,8    | 19      | 22,2   |
| F           | 9       | 12      | 15      | 27      | 32     |
| G           | 38      | 48      | 56      | 78      | 85     |
| WEIGHT kg ~ | 2,4     | 4       | 6,5     | 13      | 22     |
| FIGURE N°   | 9HL 303 | 9HL 304 | 9HL 305 | 9HL 307 | 9HL 30 |
| ITEM        | 025     | 026     | 027     | 028     |        |



B.F.E. s.r.l.  
 BONNEY FORGE

|           |            |         |
|-----------|------------|---------|
| Draw.:    | M.Teli     | 26.4.95 |
| Appr.:    | P.Gargiulo | 26.4.95 |
| Revisions |            |         |

COMPANY  
 WITH QUALITY  
 MANAGEMENT  
 CERTIFIED ACC.TO  
 ISO 9001:2008

CUSTOMER : AL YASEAH OIL & GAS IND.SUPP.& SERV  
 P.O. NUMBER : (AY/AR/STK001/17)  
 TAG NR :  
 BFE JOB NR : 171798

|  |                                      |
|--|--------------------------------------|
| Title :  |                                      |
| GLOBE VALVE B.B. O.S. & Y<br>CLASS 1500 lbs - REDUCED BORE |                                      |
| Reference<br>specification                                 | Drawing N° :<br><b>9HL 300</b>   005 |

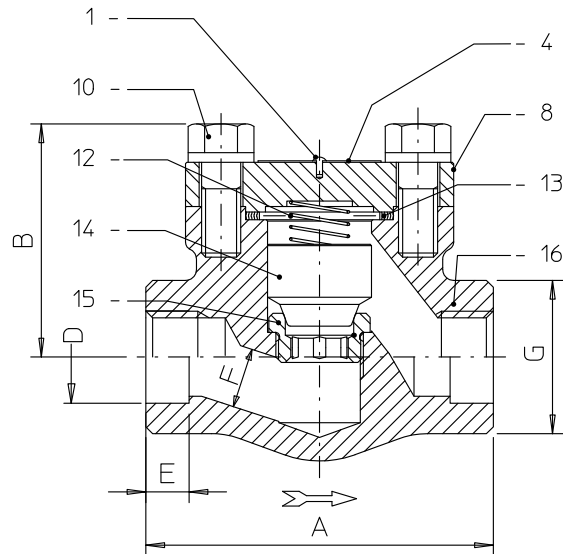


| POS | PART NAME                                 | MATERIAL           | POS | PART NAME                      | MATERIAL           |
|-----|---|--------------------|-----|--------------------------------|--------------------|
| 1   | Ribattino RIVET                           | ASTM A479 316/316L | 13  | Guarnizione spirale SPW GASKET | F316L + GRAPHITE   |
| 4   | Targhetta NAME PLATE                      | ALUMINIUM          | 14  | Pistone PISTON                 | ASTM A479 410 NACE |
| 8   | Coperchio COVER                           | ASTM A105N         | 15  | Seggio SEAT RING               | A182 F6A+ST.6      |
| 10  | VITI TESTA ESAGONALE HEXAGONAL HEAD SCREW | ASTM A193 B7M      | 16  | Corpo BODY                     | ASTM A105N         |
| 12  | Molla SPRING                              | ASTM B637 N07750   |     |                                |                    |

NOTES:  
-ALL DIMENSIONS ARE IN mm


[ ] SOCKET WELDING ENDS ACCORDING TO ANSI B16.11  
~~X~~ SCREWED ENDS ACCORDING TO ANSI B1.20.1 (NPT)

VALVES MATERIALS ACC. TO ISO 15156/NACE MR.0175 ED. 2009, NACE MR.0103 ED. 2012.



THIS DRAWING IS B.F.E. S.r.l. PROPERTY. REPRODUCTION IS STRICTLY PROHIBITED

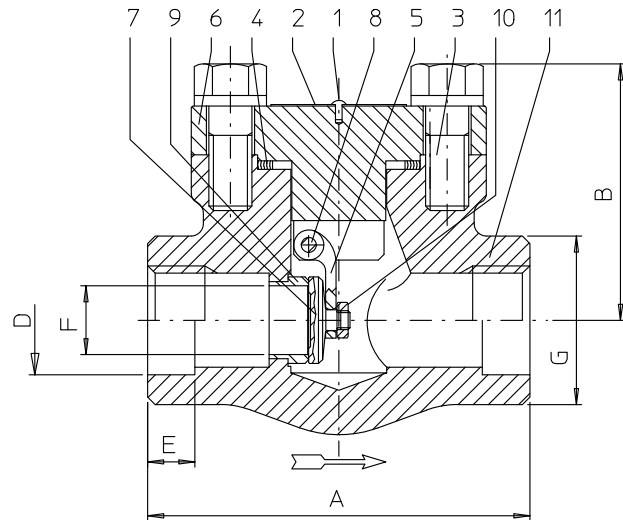
| SIZE       | 1/2"   | 3/4"   | 1"     | 1.1/2" | 2"     |
|------------|--------|--------|--------|--------|--------|
| A          | 80     | 90     | 110    | 150    | 180    |
| B          | 50     | 60     | 78     | 92     | 108    |
| D          | 21,7   | 27,1   | 33,8   | 48,6   | 61,1   |
| E          | 12,7   | 14,3   | 15,8   | 19     | 22,2   |
| F          | 9      | 13     | 17,5   | 29,5   | 35     |
| G          | 32     | 38     | 48     | 64     | 78     |
| WEIGHT kg~ | 1,3    | 1,6    | 2,8    | 5,6    | 9,0    |
| FIGURE N°  | HL 403 | HL 404 | HL 405 | HL 407 | HL 408 |
| ITEM       | 029    | 030    | 031    |        |        |

|   |           |            |         |   |   |
|---|-----------|------------|---------|---|---|
|  <b>B.F.E. s.r.l.</b><br><b>BONNEY FORGE</b> | Draw.:    | M.Teli     | 26.4.95 | <b>COMPANY WITH QUALITY MANAGEMENT CERTIFIED ACC.TO ISO 9001:2008</b> | Title : <b>PISTON CHECK VALVES CLASS 800 lbs - REDUCED BORE</b> |
|   | Appr.:    | P.Gargiulo | 26.4.95 |   |   |
| CUSTOMER : AL YASEAH OIL & GAS IND.SUPP.& SERV<br>P.O. NUMBER : (AY/AR/STK001/17)<br>TAG NR :<br>BFE JOB NR. : 171798           | Revisions |            |         | Reference specification<br><b>EN ISO 15781</b>                        | Drawing N° :<br><b>HL 400   006</b>                             |
|   |           |            |         |   |   |

| POS | PART NAME                  | MATERIAL           | POS | PART NAME              | MATERIAL             |
|-----|----------------------------|--------------------|-----|------------------------|----------------------|
| 1   | Ribattino RIVET            | ASTM A479 316/316L | 7   | Battente DISC          | ASTM A182 F6A        |
| 2   | Targhetta NAME PLATE       | ALUMINIUM          | 8   | Spina HINGE PIN        | ASTM A182 F316/F316L |
| 3   | Bulloni c/c B/B/ BOLTS     | ASTM A193 B7M      | 9   | Seggio SEAT RING       | A182 F6A+ST.6        |
| 4   | Guarnizione C/C B/B GASKET | F316L + GRAPHITE   | 10  | Dado battente DISC NUT | ASTM A194 GR.8       |
| 5   | Leva HINGE                 | ASTM A182 F6A      | 11  | Corpo BODY             | ASTM A105N           |
| 6   | Coperchio COVER            | ASTM A105N         |     |                        |                      |

NOTES:  
-ALL DIMENSIONS ARE IN mm

[ ] SOCKET WELDING ENDS ACCORDING TO ANSI B16.11  
 [X] SCREWED ENDS ACCORDING TO ANSI B1.20.1 (NPT)  
 VALVES MATERIALS ACC. TO ISO 15156/NACE MR.0175 ED. 2009, NACE MR.0103 ED. 2012.



| SIZE       | 1/2"   | 3/4"   | 1"     | 1.1/2" | 2"     |
|------------|--------|--------|--------|--------|--------|
| A          | 80     | 90     | 110    | 150    | 180    |
| B          | 55     | 60     | 78     | 92     | 108    |
| D          | 21,7   | 27,1   | 33,8   | 48,6   | 61,1   |
| E          | 12,7   | 14,3   | 15,8   | 19     | 22,2   |
| F          | 9,6    | 14     | 18     | 30     | 36,6   |
| G          | 32     | 38     | 48     | 64     | 78     |
| WEIGHT kg~ | 1,3    | 1,5    | 2,8    | 5,7    | 8,8    |
| FIGURE N°  | HL 603 | HL 604 | HL 605 | HL 607 | HL 608 |
| ITEM       |        |        | 034    | 036    | 037    |

**B** B.F.E. s.r.l.  
BONNEY FORGE

Draw.: M.Teli 24.7.95  
 Appr.: P.Gargiulo 24.7.95  
 Revisions

COMPANY  
WITH QUALITY  
MANAGEMENT  
CERTIFIED ACC.TO  
ISO 9001:2008

Title : SWING CHECK VALVES  
CLASS 800 lbs - REDUCED BORE

Reference  
specification  
**EN ISO  
15781**

Drawing N° :  
**HL 600** | 007

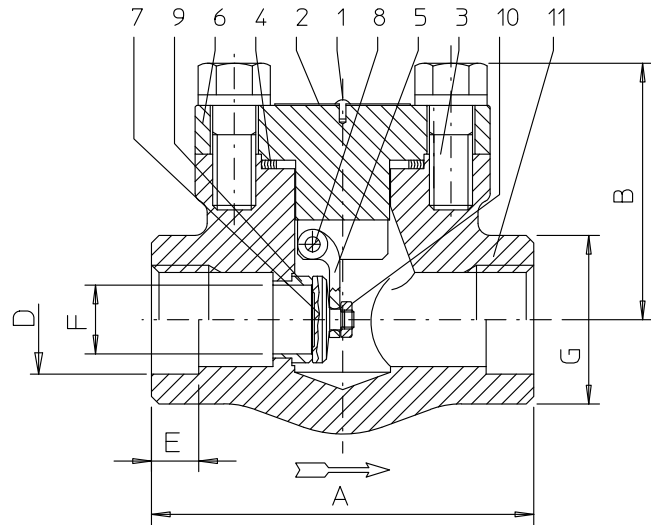
CUSTOMER : AL YASEAH OIL & GAS IND.SUPP.& SERV  
 P.O. NUMBER : (AY/AR/STK001/17)  
 TAG NR :  
 BFE JOB NR. : 171798

THIS DRAWING IS B.F.E. S.r.l. PROPERTY. REPRODUCTION IS STRICTLY PROHIBITED

| POS | PART NAME                     | MATERIAL           | POS | PART NAME                 | MATERIAL             |
|-----|-------------------------------|--------------------|-----|---------------------------|----------------------|
| 1   | Ribattino<br>RIVET            | ASTM A479 316/316L | 7   | Battente<br>DISC          | ASTM A182 F6A        |
| 2   | Targhetta<br>NAME PLATE       | ALUMINIUM          | 8   | Spina<br>HINGE PIN        | ASTM A182 F316/F316L |
| 3   | Bulloni c/c<br>B/B/ BOLTS     | ASTM A193 B7M      | 9   | Seggio<br>SEAT RING       | A182 F6A+ST.6        |
| 4   | Guarnizione C/C<br>B/B GASKET | F316L + GRAPHITE   | 10  | Dado battente<br>DISC NUT | ASTM A194 GR.8       |
| 5   | Leva<br>HINGE                 | ASTM A182 F6A      | 11  | Corpo<br>BODY             | ASTM A105N           |
| 6   | Coperchio<br>COVER            | ASTM A105N         |     |                           |                      |

NOTES:  
-ALL DIMENSIONS ARE IN mm

[ ] SOCKET WELDING ENDS ACCORDING TO ANSI B16.11  
 X SCREWED ENDS ACCORDING TO ANSI B1.20.1 (NPT)  
 VALVES MATERIALS ACC. TO ISO 15156/NACE MR.0175 ED. 2009, NACE MR.0103 ED. 2012.



| SIZE       | 1/2"    | 3/4"    | 1"      | 1.1/2"  | 2"     |
|------------|---------|---------|---------|---------|--------|
| A          | 90      | 110     | 127     | 180     | 210    |
| B          | 60      | 76      | 86      | 106     | 142    |
| D          | 21,7    | 27,1    | 33,8    | 48,6    | 61,1   |
| E          | 12,7    | 14,3    | 15,8    | 19      | 22,2   |
| F          | 9,6     | 14      | 18      | 30      | 36,6   |
| G          | 38      | 48      | 56      | 78      | 85     |
| WEIGHT kg~ | 1,6     | 2,9     | 4,3     | 10      | 18     |
| FIGURE N°  | 9HL 603 | 9HL 604 | 9HL 605 | 9HL 607 | 9HL 60 |
| ITEM       |         |         | 040     | 041     | 042    |

**B** B.F.E. s.r.l.  
BONNEY FORGE

Draw.: M.Teli 26.4.95  
 Appr.: P.Gargiulo 26.4.95  
 Revisions: | | | | |

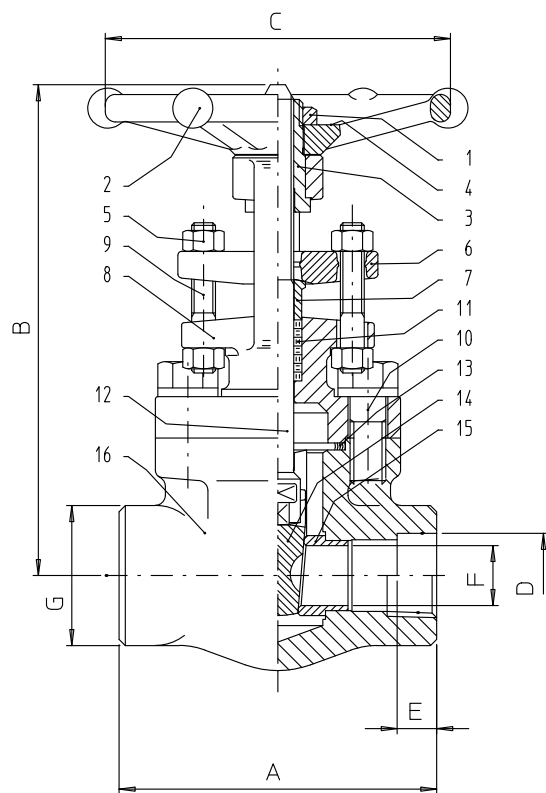
COMPANY  
WITH QUALITY  
MANAGEMENT  
CERTIFIED ACC.TO  
ISO 9001:2008

Title : SWING CHECK VALVES  
CLASS 1500 lbs - REDUCED BORE

Reference specification Drawing N° :  
**9HL 600** | 008

CUSTOMER : AL YASEAH OIL & GAS IND.SUPP.& SERV  
 P.O. NUMBER : (AY/AR/STK001/17)  
 TAG NR :  
 BFE JOB NR. : 171798

THIS DRAWING IS B.F.E. S.r.l. PROPERTY. REPRODUCTION IS STRICTLY PROHIBITED



| POS | PART NAME                                    | MATERIAL             |
|-----|--|----------------------|
| 1   | Dado volante<br>HANDWHEEL NUT                | A563 GR.A BZP        |
| 2   | Volantino<br>HANDWHEEL                       | ASTM A105            |
| 3   | Madrevite<br>YOKE SLEEVE                     | A582 TP416 TEMP.     |
| 4   | Targhetta<br>NAME PLATE                      | ALUMINIUM            |
| 5   | Dado premitreccia<br>GLAND NUTS              | ASTM A194 8M         |
| 6   | Flangia premitreccia<br>GLAND FLANGE         | ASTM A182 F316/F316L |
| 7   | Premitreccia<br>PACKING GLAND                | ASTM A182 F316/F316L |
| 8   | Coperchio<br>BONNET                          | ASTM A182 F316/F316L |
| 9   | Tiranti premitreccia<br>GLAND STUDS          | A193/A320 B8M CL.1   |
| 10  | Vite testa esagonale<br>HEXAGONAL HEAD SCREW | A193/A320 B8M CL.1   |
| 11  | Baderna<br>PACKING                           | GRAPHITE ECO-SEAL    |
| 12  | Stelo<br>STEM                                | ASTM A182 F316/F316L |
| 13  | Guarnizione spirale<br>SPW GASKET            | F316L + GRAPHITE     |
| 14  | Otturatore<br>WEDGE                          | ASTM A182 F316/F316L |
| 15  | Seggio<br>SEAT RINGS                         | A182 F316/F316L+ST.6 |
| 16  | Corpo<br>BODY                                | ASTM A182 F316/F316L |

NOTES:  
-ALL DIMENSIONS ARE IN mm

( ) SOCKET WELDING ENDS ACCORDING TO ANSI B16.11  
X SCREWED ENDS ACCORDING TO ANSI B1.20.1 (NPT)

VALVES MATERIALS ACC. TO ISO 15156/NACE MR.0175 ED. 2009, NACE MR.0103 ED. 2012.

| SIZE       | 1/2"   | 3/4"   | 1"     | 1.1/2" | 2"     | 2.1/2" | 3"      |
|------------|--------|--------|--------|--------|--------|--------|---------|
| A          | 80     | 90     | 110    | 127    | 134    | 216    | 225     |
| B open     | 152    | 158    | 196    | 255    | 270    | 330    | 330     |
| C          | 88     | 88     | 97     | 138    | 138    | 172    | 172     |
| D          | 21.7   | 27.1   | 33.8   | 48.6   | 61.1   | 73.9   | 89.8    |
| E          | 12.7   | 14.3   | 15.8   | 19     | 22.2   | 16     | 16      |
| F          | 9.6    | 14     | 18     | 30     | 36.6   | 48     | 48      |
| G          | 32     | 38     | 48     | 64     | 78     | 118    | 100     |
| WEIGHT kg~ | 1.9    | 2.3    | 3.6    | 7.3    | 7.5    | 13     | 15      |
| FIGURE N°  | HL 103 | HL 104 | HL 105 | HL 107 | HL 108 | HL 109 | HL 1010 |
| ITEM       | 043    | 044    |        |        |        |        |         |



B.F.E. s.r.l.  
BONNEY FORGE

Draws: M.Teli 26.4.95  
Appr.: P.Gargiulo 26.4.95  
Revisions

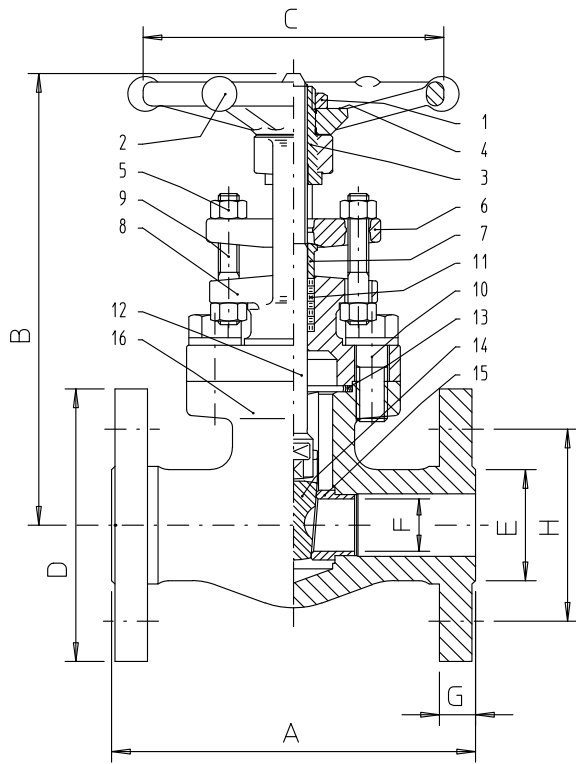
COMPANY  
WITH QUALITY  
MANAGEMENT  
CERTIFIED ACC.TO  
ISO 9001:2008

Title : GATE VALVE B.B. O.S. & Y  
CLASS 800 lbs - REDUCED BORE

Reference specification  
API 602  
EN ISO 15781  
Drawing N° : HL 100 | 009

CUSTOMER : AL YASEAH OIL & GAS IND.SUPP.& SERV  
P.O. NUMBER : (AY/AR/STK001/17)  
TAG NR :  
BFE JOB NR : 171798

THIS DRAWING IS B.F.E. S.r.l. PROPERTY, REPRODUCTION IS STRICTLY PROHIBITED



| POS | PART NAME                           | MATERIAL             |
|-----|-------------------------------------|----------------------|
| 1   | Dado volante<br>HANDWHEEL NUT       | A563 GR.A BZP        |
| 2   | Volantino<br>HANDWHEEL              | ASTM A105            |
| 3   | Madrevite<br>YOKE SLEEVE            | A582 TP416 TEMP.     |
| 4   | Targhetta<br>NAME PLATE             | ALUMINIUM            |
| 5   | Dado premitreccia<br>GLAND NUTS     | ASTM A194 2HM        |
| 6   | Flangia premitrec.<br>GLAND FLANGE  | ASTM A105            |
| 7   | Premitreccia<br>PACKING GLAND       | ASTM A182 F316/F316L |
| 8   | Coperchio<br>BONNET                 | ASTM A105N           |
| 9   | Tiranti premitreccia<br>GLAND STUDS | ASTM A193 B7M        |
| 10  | Bulloni C/C<br>B/B BOLTS            | ASTM A193 B7M        |
| 11  | Baderna<br>PACKING                  | GRAPHITE ECO-SEAL    |
| 12  | Stelo<br>STEM                       | ASTM A182 F6A        |
| 13  | Guarnizione spirale<br>SPW GASKET   | F316L + GRAPHITE     |
| 14  | Otturatore solido<br>SOLID WEDGE    | ASTM A182 F6A NACE   |
| 15  | Seggio<br>SEAT RINGS                | A182 F6A+ST.6        |
| 16  | Corpo<br>BODY                       | ASTM A105N           |

NOTES:  
-ALL DIMENSIONS ARE IN mm

SERRATED SPIRAL FINISH - 3,2 - 6,3 Ra (125 - 250 AARH)

VALVES MATERIALS ACC. TO ISO 15156/NACE MR.0175 ED. 2009, NACE MR.0103 ED. 2012.

| SIZE        | 1/2"   | 3/4"   | 1"     | 1.1/2" | 2"     | 3"      |
|-------------|--------|--------|--------|--------|--------|---------|
| A           | 108    | 117,5  | 127    | 165    | 178    | 203     |
| B open      | 175    | 182    | 212    | 255    | 290    | 330     |
| C           | 88     | 88     | 97     | 138    | 138    | 172     |
| D           | 89     | 98,5   | 108    | 127    | 152,5  | 190,5   |
| E           | 35     | 43     | 51     | 73     | 92     | 127     |
| F           | 9,6    | 14     | 18     | 30     | 36,6   | 48      |
| G           | 11,5   | 13     | 14,5   | 17,5   | 19,5   | 24      |
| H           | 60     | 70     | 79,5   | 98,5   | 121    | 152     |
| n x Ø holes | 4x16   | 4x16   | 4x16   | 4x16   | 4x19   | 4x19    |
| WEIGHT kg-  | 2,9    | 3,7    | 5,2    | 9,6    | 13,2   | 16,5    |
| FIGURE N°   | L1 103 | L1 104 | L1 105 | L1 107 | L1 108 | L1 1010 |
| ITEM        | 001    | 002    | 003    | 004    | 005    |         |



Draw.: M.Teli 26.4.95  
Appr.: P.Gargiulo 26.4.95  
Revisions

COMPANY  
WITH QUALITY  
MANAGEMENT  
CERTIFIED ACC.TO  
ISO 9001:2008

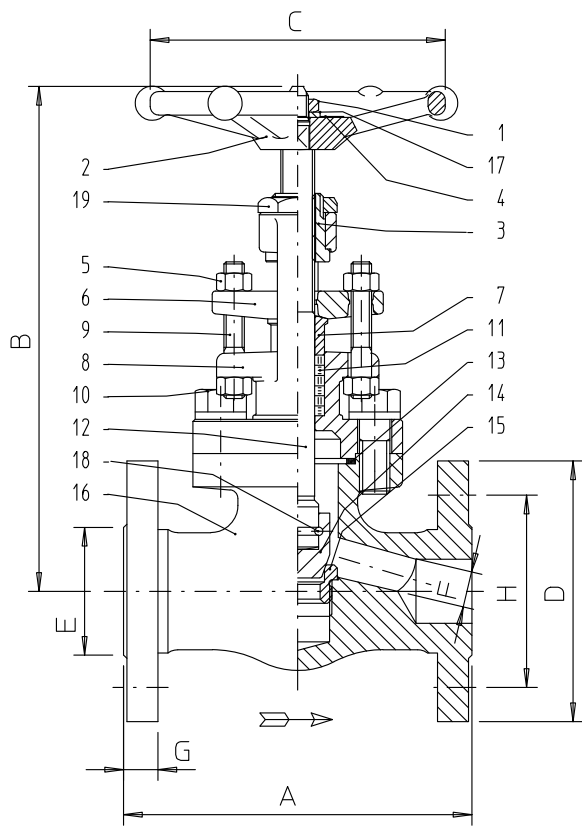
Title : GATE VALVE B.B. O.S. & Y  
INTEGRAL RF FLANGED ENDS  
CLASS 150 lbs - REDUCED BORE

Reference specification  
**API 602**  
**EN ISO 15781**

Drawing N° :  
**L1 100** | 010

CUSTOMER : AL YASEAH OIL & GAS IND.SUPP.& SERV  
P.O. NUMBER : (AY/AR/STK001/17)  
TAG NR :  
BFE JOB NR. : 171798

THIS DRAWING IS B.F.E. S.r.l. PROPERTY. REPRODUCTION IS STRICTLY PROHIBITED



| POS | PART NAME                                    | MATERIAL             |
|-----|--|----------------------|
| 1   | Dado volante<br>HANDWHEEL NUT                | ASTM A307 GR.B       |
| 2   | Volantino<br>HANDWHEEL                       | ASTM A105            |
| 3   | Madrevite<br>YOKE SLEEVE                     | ASTM A582 TP416      |
| 4   | Targhetta<br>NAME PLATE                      | ALUMINIUM            |
| 5   | Dado premitreccia<br>GLAND NUTS              | ASTM A194 2HM        |
| 6   | Flangia premitreccia<br>GLAND FLANGE         | ASTM A105            |
| 7   | Premitreccia<br>PACKING GLAND                | ASTM A182 F316/F316L |
| 8   | coperchio<br>BONNET                          | ASTM A105N           |
| 9   | Tiranti premitreccia<br>GLAND STUDS          | ASTM A193 B7M        |
| 10  | Viti testa esagonale<br>HEXAGONAL HEAD SCREW | ASTM A193 B7M        |
| 11  | Baderna<br>PACKING                           | GRAPHITE ECO-SEAL    |
| 12  | Stelo<br>STEM                                | ASTM A182 F6A        |
| 13  | Guarnizione spirale<br>SPW GASKET            | F316L + GRAPHITE     |
| 14  | Otturatore<br>DISC                           | ASTM A479 410 NACE   |
| 15  | Seggio<br>SEAT RING                          | A182 F6A+ST.6        |
| 16  | Corpo<br>BODY                                | ASTM A105N           |
| 17  | Rondella<br>WASHER                           | ASTM A105N/GALVAN.   |
| 18  | Filo di giunzione<br>CONNECTION WIRE         | ASTM A182 F316/F316L |
| 19  | Dado madre vite<br>YOKE NUT                  | A563 GR.A BZP        |

NOTES:  
-ALL DIMENSIONS ARE IN mm

SERRATED SPIRAL FINISH - 3.2 - 6.3 Ra (125 - 250 AARH)

VALVES MATERIALS ACC. TO ISO 15156/NACE MR.0175 ED. 2009, NACE MR.0103 ED. 2012.

| SIZE        | 1/2"   | 3/4"   | 1"     | 1.1/2" | 2"     |
|-------------|--------|--------|--------|--------|--------|
| A           | 108    | 117,5  | 127    | 165    | 203    |
| B open      | 196    | 196    | 226    | 240    | 300    |
| C           | 88     | 88     | 97     | 138    | 172    |
| D           | 89     | 98,5   | 108    | 127    | 152,5  |
| E           | 35     | 43     | 51     | 73     | 92     |
| F           | 10     | 14     | 17,5   | 29,5   | 35     |
| G           | 11,5   | 13     | 14,5   | 17,5   | 19,5   |
| H           | 60     | 70     | 79,5   | 98,5   | 121    |
| n x Ø holes | 4x16   | 4x16   | 4x16   | 4x16   | 4x19   |
| WEIGHT kg ~ | 3      | 3,8    | 5,5    | 10,3   | 15,8   |
| FIGURE N°   | L1 303 | L1 304 | L1 305 | L1 307 | L1 308 |
| ITEM        | 006    | 007    | 008    | 009    | 010    |

THIS DRAWING IS B.F.E. S.r.l. PROPERTY. REPRODUCTION IS STRICTLY PROHIBITED



B.F.E. S.r.l.  
BONNEY FORGE

Draw.: M.Teli 26.4.95  
Appr.: P.Gargiulo 26.4.95  
Revisions

COMPANY  
WITH QUALITY  
MANAGEMENT  
CERTIFIED ACC.TO  
ISO 9001:2008

Title : GLOBE VALVE B.B. O.S. & Y  
INTEGRAL R.F. FLANGED ENDS  
CLASS 150 lbs - REDUCED BORE

Reference  
specification  
EN ISO  
15781

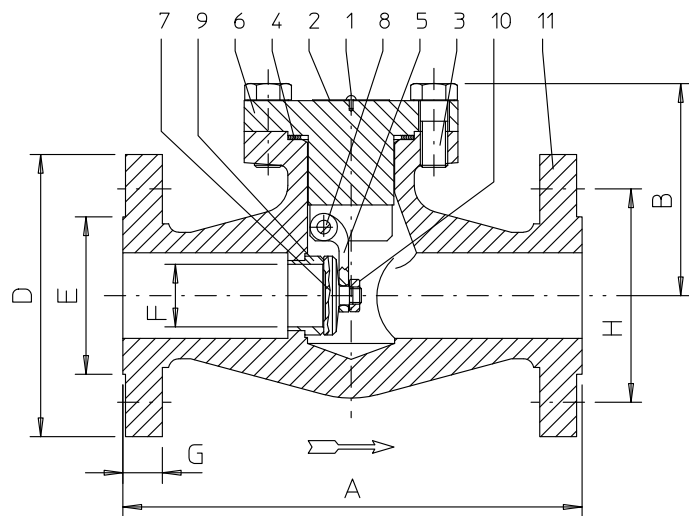
Drawing N° :  
L1 300 | 011

CUSTOMER : AL YASEAH OIL & GAS IND.SUPP.& SERV  
P.O. NUMBER : (AY/AR/STK001/17)  
TAG NR :  
BFE JOB NR : 171798

| POS | PART NAME                  | MATERIAL           | POS | PART NAME              | MATERIAL             |
|-----|----------------------------|--------------------|-----|------------------------|----------------------|
| 1   | Ribattino RIVET            | ASTM A479 316/316L | 7   | Battente DISC          | ASTM A182 F6A        |
| 2   | Targhetta NAME PLATE       | ALUMINIUM          | 8   | Spina HINGE PIN        | ASTM A182 F316/F316L |
| 3   | Bulloni c/c B/B/ BOLTS     | ASTM A193 B7M      | 9   | Seggio SEAT RING       | A182 F6A+ST.6        |
| 4   | Guarnizione C/C B/B GASKET | F316L + GRAPHITE   | 10  | Dado battente DISC NUT | ASTM A194 GR.8       |
| 5   | Leva HINGE                 | ASTM A182 F6A      | 11  | Corpo BODY             | ASTM A105N           |
| 6   | Coperchio COVER            | ASTM A105N         |     |                        |                      |

NOTES:  
-ALL DIMENSIONS ARE IN mm

SERRATED SPIRAL FINISH - 3.2 - 6.3 Ra (125 - 250 AARH)  
VALVES MATERIALS ACC. TO ISO 15156/NACE MR.0175 ED. 2009, NACE MR.0103 ED. 2012.



| SIZE        | 1/2"   | 3/4"   | 1"     | 1.1/2" | 2"     |
|-------------|--------|--------|--------|--------|--------|
| A           | 108    | 117,5  | 127    | 165    | 203    |
| B           | 75     | 75     | 85     | 110    | 125    |
| D           | 89     | 98,5   | 108    | 127    | 152,5  |
| E           | 35     | 43     | 51     | 73     | 92     |
| F           | 9,6    | 14     | 17,5   | 29,5   | 36,6   |
| G           | 11,5   | 13     | 16     | 17,5   | 20     |
| H           | 60     | 70     | 79,5   | 98,5   | 121    |
| n x Ø holes | 4x16   | 4x16   | 4x16   | 4x16   | 4x19   |
| WEIGHT kg~  | 2,2    | 3,1    | 4,4    | 8,3    | 13     |
| FIGURE N°   | L1 603 | L1 604 | L1 605 | L1 607 | L1 608 |
| ITEM        |        |        | 013    | 014    | 015    |

**B** B.F.E. s.r.l.  
BONNEY FORGE

Draw.: M.Teli 26.6.95  
Appr.: P.Gargiulo 26.6.95  
Revisions

COMPANY  
WITH QUALITY  
MANAGEMENT  
CERTIFIED ACC.TO  
ISO 9001:2008

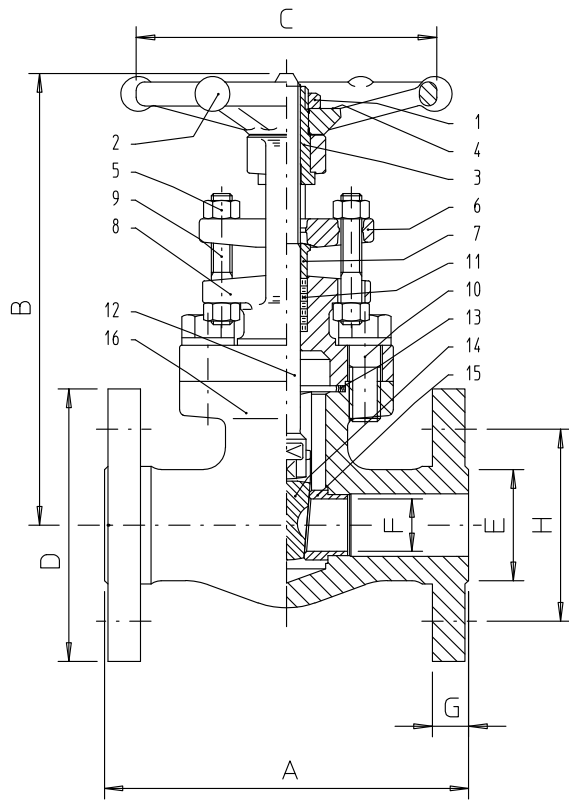
Title : SWING CHECK VALVES  
INTEGRAL RF FLANGE ENDS  
CLASS 150 lbs - REDUCED BORE

Reference  
specification  
**EN ISO  
15781**

Drawing N° :  
**L1 600** | 012

CUSTOMER : AL YASEAH OIL & GAS IND.SUPP.& SERV  
P.O. NUMBER : (AY/AR/STK001/17)  
TAG NR :  
BFE JOB NR. : 171798

THIS DRAWING IS B.F.E. S.r.l. PROPERTY. REPRODUCTION IS STRICTLY PROHIBITED




| POS | PART NAME                           | MATERIAL             |
|-----|-------------------------------------|----------------------|
| 1   | Dado volante<br>HANDWHEEL NUT       | A563 GR.A BZP        |
| 2   | Volantino<br>HANDWHEEL              | ASTM A105            |
| 3   | Madrevite<br>YOKE SLEEVE            | A582 TP416 TEMP.     |
| 4   | Targhetta<br>NAME PLATE             | ALUMINIUM            |
| 5   | Dado premitreccia<br>GLAND NUTS     | ASTM A194 2HM        |
| 6   | Flangia premitrecc.<br>GLAND FLANGE | ASTM A105            |
| 7   | Premitreccia<br>PACKING GLAND       | ASTM A182 F316/F316L |
| 8   | Coperchio<br>BONNET                 | ASTM A105N           |
| 9   | Tiranti premitreccia<br>GLAND STUDS | ASTM A193 B7M        |
| 10  | Bulloni C/C<br>B/B BOLTS            | ASTM A193 B7M        |
| 11  | Baderna<br>PACKING                  | GRAPHITE ECO-SEAL    |
| 12  | Stelo<br>STEM                       | ASTM A182 F6A        |
| 13  | Guarnizione spirale<br>SPW GASKET   | F316L + GRAPHITE     |
| 14  | Otturatore solido<br>SOLID WEDGE    | ASTM A182 F6A NACE   |
| 15  | Seggio<br>SEAT RINGS                | A182 F6A+ST.6        |
| 16  | Corpo<br>BODY                       | ASTM A105N           |

NOTES:  
-ALL DIMENSIONS ARE IN mm

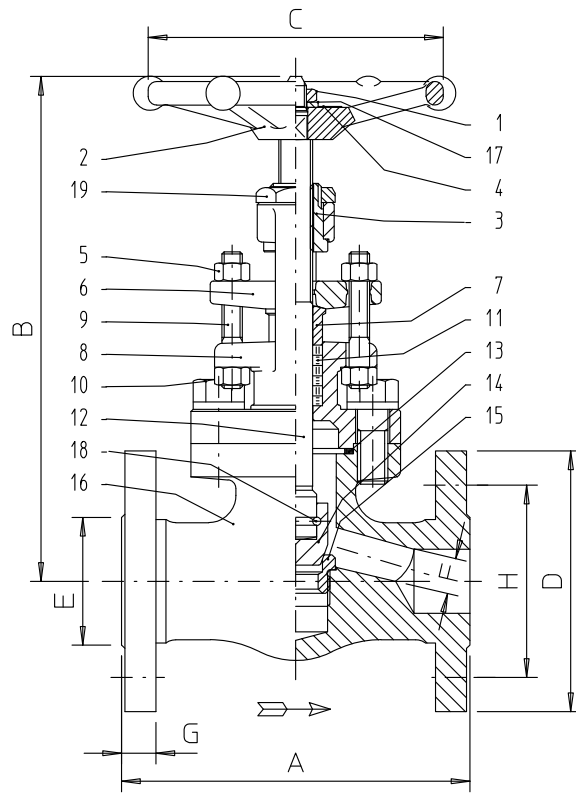
SERRATED SPIRAL FINISH - 3.2 - 6.3 Ra (125 - 250 AARH)  
VALVES MATERIALS ACC. TO ISO 15156/NACE MR.0175 ED. 2009, NACE MR.0103 ED. 2012.

| SIZE        | 1/2"   | 3/4"   | 1"     | 1.1/2" | 2"     |
|-------------|--------|--------|--------|--------|--------|
| A           | 140    | 152.5  | 165    | 191    | 216    |
| B open      | 175    | 182    | 212    | 275    | 290    |
| C           | 88     | 88     | 97     | 138    | 138    |
| D           | 95.5   | 117.5  | 124    | 155.5  | 165    |
| E           | 35     | 43     | 51     | 73     | 92     |
| F           | 9.6    | 14     | 18     | 30     | 36.6   |
| G           | 14.5   | 16     | 17.5   | 21     | 22.5   |
| H           | 67     | 82.5   | 89     | 114    | 127    |
| n x Ø holes | 4x16   | 4x19   | 4x19   | 4x22   | 8x19   |
| WEIGHT kg~  | 3.6    | 5.2    | 6.7    | 13     | 15.3   |
| FIGURE N°   | L3 103 | L3 104 | L3 105 | L3 107 | L3 108 |
| ITEM        | 016    | 017    | 018    | 019    | 020    |

THIS DRAWING IS B.F.E.'S PROPERTY. REPRODUCTION IS STRICTLY PROHIBITED

|   |                   |         |  |   |
|---|-------------------|---------|--|---|
|  <b>B.F.E. s.r.l.</b><br><b>BONNEY FORGE</b> | Drawn: M.Teli     | 26.4.95 | <b>COMPANY WITH QUALITY MANAGEMENT CERTIFIED ACC. TO ISO 9001:2008</b> | Title : GATE VALVE B.B. O.S. & Y<br>INTEGRAL FLANGED ENDS<br>CLASS 300 lbs - REDUCED BORE |
|   | Appr.: P.Gargiulo | 26.4.95 |  |   |
| CUSTOMER : AL YASEAH OIL & GAS IND.SUPP.& SERV<br>P.O. NUMBER : (AY/AR/STK001/17)<br>TAG NR :<br>BFE JOB NR. : 171798           | Revisions         |         |  | Drawing N° :<br><b>L3 100</b>   013   |





| POS | PART NAME                                    | MATERIAL             |
|-----|--|----------------------|
| 1   | Dado volante<br>HANDWHEEL NUT                | ASTM A307 GR.B       |
| 2   | Volantino<br>HANDWHEEL                       | ASTM A105            |
| 3   | Madrevite<br>YOKE SLEEVE                     | ASTM A582 TP416      |
| 4   | Targhetta<br>NAME PLATE                      | ALUMINIUM            |
| 5   | Dado premitreccia<br>GLAND NUTS              | ASTM A194 2HM        |
| 6   | Flangia premitreccia<br>GLAND FLANGE         | ASTM A105            |
| 7   | Premitreccia<br>PACKING GLAND                | ASTM A182 F316/F316L |
| 8   | coperchio<br>BONNET                          | ASTM A105N           |
| 9   | Tiranti premitreccia<br>GLAND STUDS          | ASTM A193 B7M        |
| 10  | Viti testa esagonale<br>HEXAGONAL HEAD SCREW | ASTM A193 B7M        |
| 11  | Baderna<br>PACKING                           | GRAPHITE ECO-SEAL    |
| 12  | Stelo<br>STEM                                | ASTM A182 F6A        |
| 13  | Guarnizione spirale<br>SPW GASKET            | F316L + GRAPHITE     |
| 14  | Otturatore<br>DISC                           | ASTM A479 410 NACE   |
| 15  | Seggio<br>SEAT RING                          | A182 F6A+ST.6        |
| 16  | Corpo<br>BODY                                | ASTM A105N           |
| 17  | Rondella<br>WASHER                           | ASTM A105N/GALVAN.   |
| 18  | Filo di giunzione<br>CONNECTION WIRE         | ASTM A182 F316/F316L |
| 19  | Dado madrevite<br>YOKE NUT                   | A563 GR.A BZP        |

NOTES:  
-ALL DIMENSIONS ARE IN mm

SERRATED SPIRAL FINISH - 3,2 - 6,3 Ra (125 - 250 AARH)

VALVES MATERIALS ACC. TO ISO 15156/NACE MR.0175 ED. 2009, NACE MR.0103 ED. 2012.

THIS DRAWING IS B.F.E. S.r.l. PROPERTY. REPRODUCTION IS STRICTLY PROHIBITED

| SIZE        | 1/2"   | 3/4"   | 1"     | 1.1/2" | 2"     |
|-------------|--------|--------|--------|--------|--------|
| A           | 152,5  | 178    | 203    | 229    | 267    |
| B open      | 196    | 202    | 226    | 285    | 321    |
| C           | 88     | 88     | 97     | 138    | 172    |
| D           | 95,5   | 117,5  | 124    | 155,5  | 165    |
| E           | 35     | 43     | 51     | 73     | 92     |
| F           | 9      | 13     | 17,5   | 29,5   | 35     |
| G           | 14,5   | 16     | 17,5   | 19     | 21     |
| H           | 67     | 82,5   | 89     | 114    | 127    |
| n x Ø holes | 4x16   | 4x19   | 4x19   | 4x22   | 8x19   |
| WEIGHT kg ~ | 4,1    | 6      | 8,3    | 15,5   | 21,5   |
| FIGURE N°   | L3 303 | L3 304 | L3 305 | L3 307 | L3 308 |
| ITEM        | 021    | 022    | 023    | 024    | 025    |



B.F.E. S.r.l.  
BONNEY FORGE

Draw.: M.Teli 26.4.95  
Appr.: P.Gargiulo 26.4.95  
Revisions

COMPANY  
WITH QUALITY  
MANAGEMENT  
CERTIFIED ACC.TO  
ISO 9001:2008

Title : GLOBE VALVE B.B. O.S. & Y  
INTEGRAL R.F. FLANGED ENDS  
CLASS 300 lbs - REDUCED BORE

Reference  
specification  
**API 602**  
**EN ISO**  
**15781**

Drawing N°:  
**L3 300 | 014**

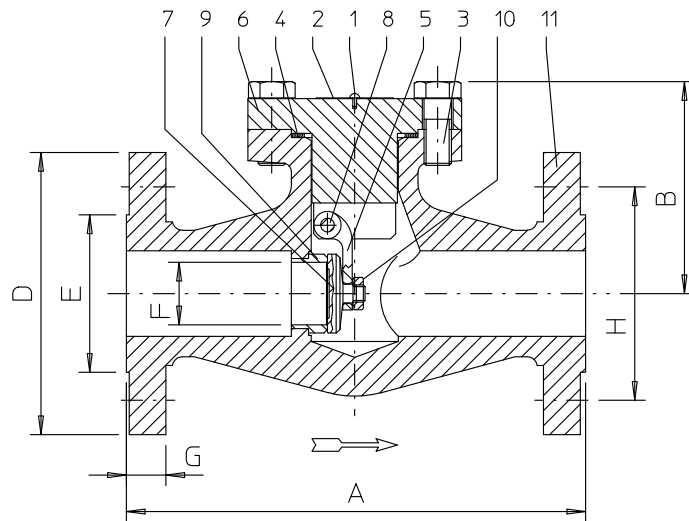
CUSTOMER : AL YASEAH OIL & GAS IND.SUPP.& SERV  
P.O. NUMBER : (AY/AR/STK001/17)  
TAG NR :  
BFE JOB NR : 171798

| POS | PART NAME                                 | MATERIAL           | POS | PART NAME              | MATERIAL             |
|-----|---|--------------------|-----|------------------------|----------------------|
| 1   | Ribattino RIVET                           | ASTM A479 316/316L | 7   | Battente DISC          | ASTM A182 F6A        |
| 2   | Targhetta NAME PLATE                      | ALUMINIUM          | 8   | Spina HINGE PIN        | ASTM A182 F316/F316L |
| 3   | VITI TESTA ESAGONALE HEXAGONAL HEAD SCREW | ASTM A193 B7M      | 9   | Seggio SEAT RING       | A182 F6A+ST.6        |
| 4   | Guarnizione spirale SPW GASKET            | F316L + GRAPHITE   | 10  | Dado battente DISC NUT | ASTM A194 GR.8       |
| 5   | Leva HINGE                                | ASTM A182 F6A      | 11  | Corpo BODY             | ASTM A105N           |
| 6   | Coperchio COVER                           | ASTM A105N         |     |                        |                      |

NOTES:  
-ALL DIMENSIONS ARE IN mm

SERRATED SPIRAL FINISH - 3,2 - 6,3 Ra (125 - 250 AARH)

VALVES MATERIALS ACC. TO ISO 15156/NACE MR.0175 ED. 2009, NACE MR.0103 ED. 2012.



| SIZE        | 1/2"   | 3/4"   | 1"     | 1.1/2" | 2"     |
|-------------|--------|--------|--------|--------|--------|
| A           | 152,5  | 178    | 216    | 241    | 267    |
| B           | 72     | 80     | 85     | 115    | 130    |
| D           | 95,5   | 117,5  | 124    | 155,5  | 165    |
| E           | 35     | 43     | 51     | 73     | 92     |
| F           | 9,6    | 14     | 18     | 30     | 36,6   |
| G           | 14,5   | 16     | 17,5   | 21     | 22,5   |
| H           | 67     | 82,5   | 89     | 114    | 127    |
| n x Ø holes | 4x16   | 4x19   | 4x19   | 4x23   | 8x19   |
| WEIGHT kg~  | 3,3    | 5,2    | 7,4    | 13,5   | 18     |
| FIGURE N°   | L3 603 | L3 604 | L3 605 | L3 607 | L3 608 |
| ITEM        |        |        |        | 029    | 030    |

THIS DRAWING IS B.F.E. S.r.l. PROPERTY. REPRODUCTION IS STRICTLY PROHIBITED

**B.F.E.** s.r.l.  
BONNEY FORGE

Draw.: M.Teli 20.9.95  
Appr.: P.Gargiulo 20.9.95  
Revisions

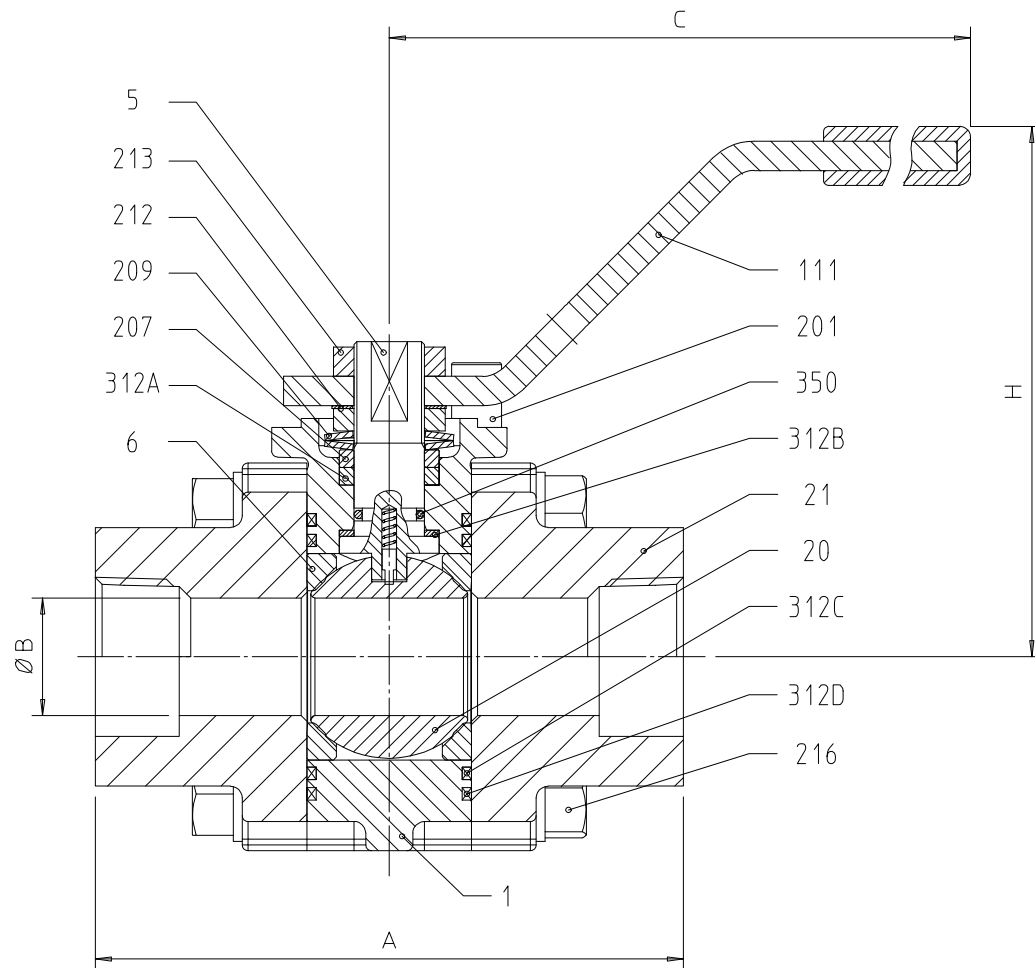
COMPANY  
WITH QUALITY  
MANAGEMENT  
CERTIFIED ACC.TO  
ISO 9001:2008

Title : SWING CHECK VALVES  
INTEGRAL RF FLANGE ENDS  
CLASS 300 lbs - REDUCED BORE

Reference  
specification  
**EN ISO  
15781**

Drawing N° :  
**L3 600 | 015**

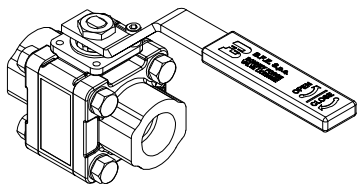
CUSTOMER : AL YASEAH OIL & GAS IND.SUPP.& SERV  
P.O. NUMBER : (AY/AR/STK001/17)  
TAG NR :  
BFE JOB NR. : 171798



| BILL OF MATERIALS |                      |                     |
|-------------------|----------------------|---------------------|
| ITEM              | DESCRIPTION          | MATERIAL            |
| 1                 | BODY                 | ASTM A105N          |
| 5                 | STEM                 | ASTM A479 316       |
| 6                 | SEAT                 | RPTFE C-GRAPHITE    |
| 20                | BALL                 | ASTM A479 316       |
| 21                | END CONNECTION       | ASTM A105N          |
| N.A.              | NAMEPLATE            | STAINLESS STEEL     |
| 111               | HANDLE               | ZINC PLATED C-STEEL |
| 201               | STOP PIN             | AISI 316            |
| 207               | PACKING GLAND        | ASTM A479 316       |
| 209               | SPRING WASHER        | AISI 316            |
| 212               | STOP WASHER          | AISI 316            |
| 213               | HANDLE NUT           | ASTM A307 GR.B      |
| 216               | BOLT                 | ASTM A193 B7M       |
| 312A              | FIRESAFE STEM GASKET | GRAPHITE            |
| 312B              | THRUST WASHER        | RPTFE C-GRAPHITE    |
| 312C              | FIRST BODY GASKET    | RPTFE C-GRAPHITE    |
| 312D              | FIRESAFE BODY GASKET | GRAPHITE            |
| 350               | O-RING               | VITON               |

**WARNING!:** THE ENDS MUST BE DISMOUNTED FROM THE BODY, BEFORE THE WELDING IN LINE, TO AVOID THE DAMAGING OF THE SOFT SEATS DUE TO THE HIGH TEMPERATURE.

3D SKETCH



The information in this document is proprietary to B.F.E. S.r.l. - No part of this document may be reproduced, copied, or transmitted in any form or for any purpose without the express prior written permission of B.F.E. S.r.l.

|      |  |
|------|--|
| NOTE | 1: DIMENSIONS IN MILLIMETERS.            |
|      | 2: DESIGN ACCORDING TO EN BS 17292.      |
|      | 3: FULLY COMPLIANCE WITH PED 2014/68/EU. |
|      |  |

| FIGURE                                | HN 703 | HN 704 | HN 705 | HN 707 |
|---------------------------------------|--------|--------|--------|--------|
| VALVE SIZE                            | 1/2"   | 3/4"   | 1"     | 1-1/2" |
| WT                                    | 1.3Kg  | 2.4Kg  | 3.1Kg  | 6.8Kg  |
| H                                     | 76     | 108    | 111    | 130    |
| C                                     | 160    | 195    | 195    | 360    |
| B                                     | 14     | 20     | 25.4   | 38     |
| A                                     | 80     | 100    | 110    | 140    |
| SOCKET WELD END ACC. TO B16.11 ITEM   |        |        |        |        |
| THREADED NPT END ACC. TO B1.20.1 ITEM |        |        |        |        |
|                                       | 001    | 002    | 003    | 004    |

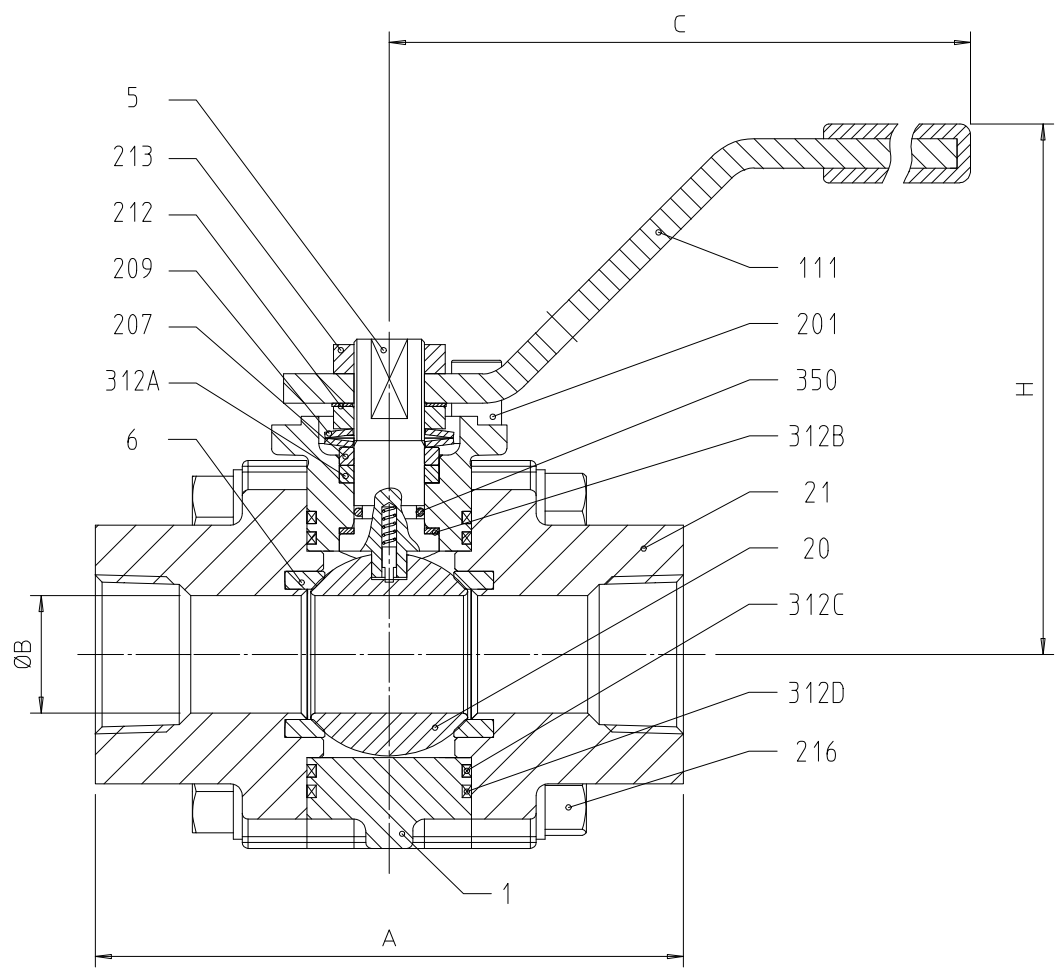
**B.F.E. S.r.l.**  
BONNEY FORGE

|          |      |          |
|----------|------|----------|
| DRW      | M.P. | 13.04.11 |
| APP      | I.A. | 13.04.11 |
| REVISION |      |          |

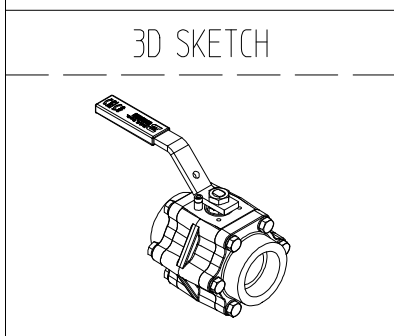
CUSTOMER : AL YASEAH OIL & GAS IND.SUPP.& SERV  
P.O. NUMBER : (AY/AR/STK001/17)  
TAG. NR. : N.A.  
BFE JOB NR. : 171798

COMPANY WITH QUALITY SYSTEM CERTIFIED ACC.TO **ISO 9001**

DESCRIPTION  
FULL BORE BALL VALVE  
FLOATING TYPE - ASME CLASS 800  
DRAWING NUMBER  
**A01BF08A3W171798001A**



| BILL OF MATERIALS |                      |                     |
|-------------------|----------------------|---------------------|
| ITEM              | DESCRIPTION          | MATERIAL            |
| 1                 | BODY                 | ASTM A105N          |
| 5                 | STEM                 | ASTM A479 316       |
| 6                 | SEAT                 | PEEK + GRAPHITE     |
| 20                | BALL                 | ASTM A479 316       |
| 21                | END CONNECTION       | ASTM A105N          |
| N.A.              | NAMEPLATE            | STAINLESS STEEL     |
| 111               | HANDLE               | ZINC PLATED C-STEEL |
| 201               | STOP PIN             | AISI 316            |
| 207               | PACKING GLAND        | ASTM A479 316       |
| 209               | SPRING WASHER        | AISI 316            |
| 212               | STOP WASHER          | AISI 316            |
| 213               | HANDLE NUT           | ASTM A307 GR.B      |
| 216               | BOLT                 | ASTM A193 B7M       |
| 312A              | FIRESAFE STEM GASKET | GRAPHITE            |
| 312B              | THRUST WASHER        | RPTFE C-GRAPHITE    |
| 312C              | FIRST BODY GASKET    | RPTFE C-GRAPHITE    |
| 312D              | FIRESAFE BODY GASKET | GRAPHITE            |
| 350               | O-RING               | VITON               |



|                                       |  |            |        |
|---------------------------------------|--|------------|--------|
| NOTE                                  | 1: DIMENSIONS IN MILLIMETERS.            | FIGURE     | HN 708 |
|                                       | 2: DESIGN ACCORDING TO EN BS 17292.      | VALVE SIZE | 2"     |
|                                       | 3: FULLY COMPLIANCE WITH PED 2014/68/EU. | WT         | 16Kg   |
|                                       |  | H          | 166    |
|                                       |  | C          | 362    |
|                                       |  | B          | 49     |
|                                       | A  | 188        |        |
| THREADED NPT END ACC. TO B1.20.1 ITEM |  |            | 005    |

**B.F.E. S.r.l.**  
BONNEY FORGE

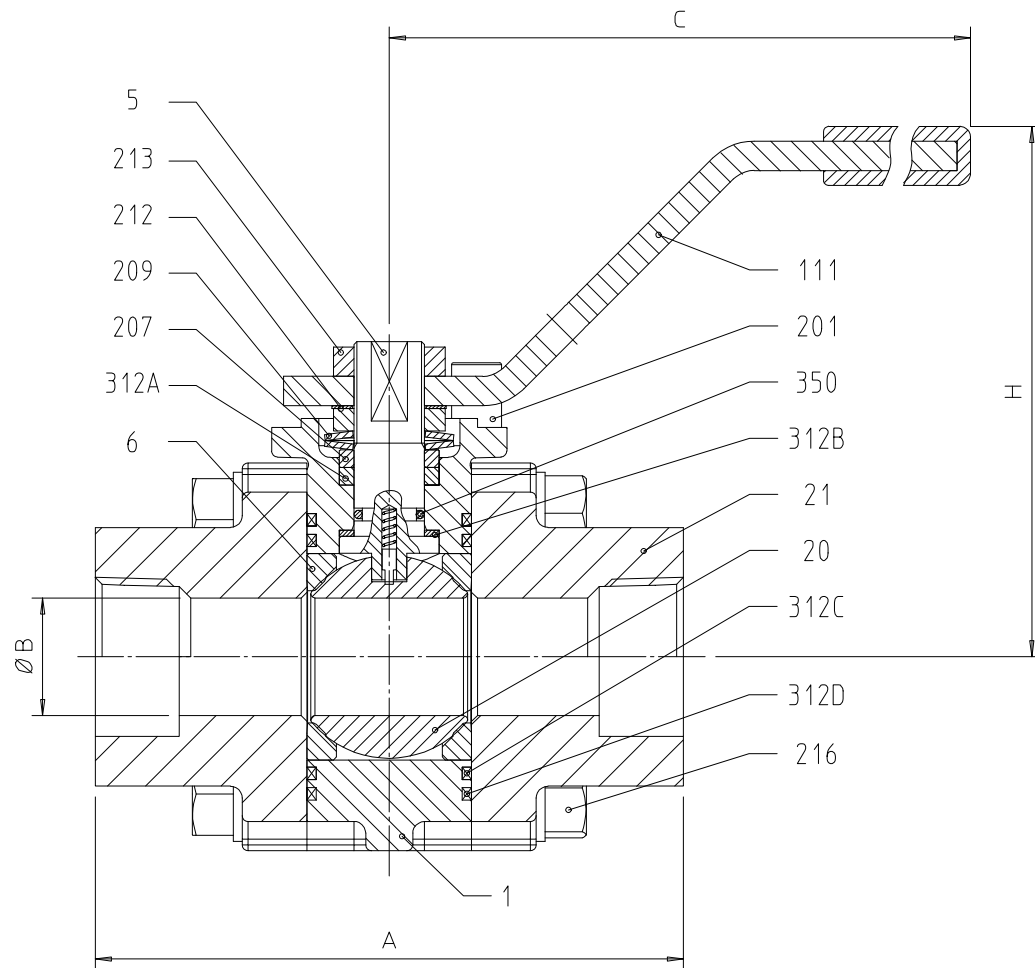
|          |      |          |
|----------|------|----------|
| DRW      | M.P. | 16.04.11 |
| APP      | I.A. | 16.04.11 |
| REVISION |      |          |

CUSTOMER : AL YASEAH OIL & GAS IND.SUPP.& SERV  
P.O. NUMBER : (AY/AR/STK001/17)  
TAG. NR. : N.A.  
BFE JOB NR. : 171798

COMPANY WITH QUALITY SYSTEM CERTIFIED ACC.TO **ISO 9001**

DESCRIPTION  
FULL BORE BALL VALVE  
FLOATING TYPE - ASME CLASS 800  
DRAWING NUMBER  
**A01BF08A8W171798005A**

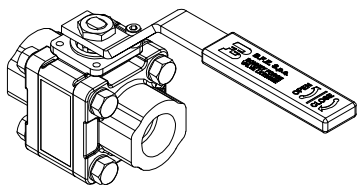
The information in this document is proprietary to B.F.E. S.r.l. - No part of this document may be reproduced, copied, or transmitted in any form or for any purpose without the express prior written permission of B.F.E. S.r.l.



| BILL OF MATERIALS |                      |                     |
|-------------------|----------------------|---------------------|
| ITEM              | DESCRIPTION          | MATERIAL            |
| 1                 | BODY                 | ASTM A182 F316-L    |
| 5                 | STEM                 | ASTM A479 316       |
| 6                 | SEAT                 | RPTFE C-GRAPHITE    |
| 20                | BALL                 | ASTM A479 316       |
| 21                | END CONNECTION       | ASTM A182 F316-L    |
| N.A.              | NAMEPLATE            | STAINLESS STEEL     |
| 111               | HANDLE               | ZINC PLATED C-STEEL |
| 201               | STOP PIN             | AISI 316            |
| 207               | PACKING GLAND        | ASTM A479 316       |
| 209               | SPRING WASHER        | AISI 316            |
| 212               | STOP WASHER          | AISI 316            |
| 213               | HANDLE NUT           | ASTM A307 GR.B      |
| 216               | BOLT                 | ASTM A193 B8M       |
| 312A              | FIRESAFE STEM GASKET | GRAPHITE            |
| 312B              | THRUST WASHER        | RPTFE C-GRAPHITE    |
| 312C              | FIRST BODY GASKET    | RPTFE C-GRAPHITE    |
| 312D              | FIRESAFE BODY GASKET | GRAPHITE            |
| 350               | O-RING               | VITON               |

**WARNING!!:** THE ENDS MUST BE DISMOUNTED FROM THE BODY, BEFORE THE WELDING IN LINE, TO AVOID THE DAMAGING OF THE SOFT SEATS DUE TO THE HIGH TEMPERATURE.

3D SKETCH



The information in this document is proprietary to B.F.E. S.r.l. - No part of this document may be reproduced, copied, or transmitted in any form or for any purpose without the express prior written permission of B.F.E. S.r.l.

| FIGURE | HLN 703   | HLN 704 | HLN 705 | HLN 707 | HLN 708 |
|--------|---|---------|---------|---------|---------|
|        | VALVE SIZE  | 1/2"    | 3/4"    | 1"      | 1-1/2"  |
| WT     | 1Kg   | 1.3Kg   | 2.4Kg   | 4.5Kg   | 6.8Kg   |
| H      | 73  | 76      | 108     | 125     | 130     |
| C      | 160   | 160     | 195     | 260     | 360     |
| B      | 11  | 14      | 20      | 32      | 38      |
| A      | 75  | 80      | 100     | 120     | 140     |
| NOTE   | 1 : DIMENSIONS IN MILLIMETERS.<br>2 : DESIGN ACCORDING TO EN BS 17292.<br>3 : FULLY COMPLIANCE WITH PED 2014/68/EU. |         |         |         |         |
|        | SOCKET WELD END ACC. TO B16.11 ITEM   |         |         |         |         |
|        | 006   | 007     | 008     | 009     | 010     |
|        | THREADED NPT END ACC. TO B1.20.1 ITEM   |         |         |         |         |

|  |               |          |   |          |
|--|---------------|----------|---|----------|
|  | B.F.E. S.r.l. | DRW      | M.P.  | 13.04.11 |
|  | BONNEY FORGE  | APP      | I.A.  | 13.04.11 |
|  |               | REVISION |   |          |
| CUSTOMER : AL YASEAH OIL & GAS IND.SUPP.& SERV<br>P.O. NUMBER : (AY/AR/STK001/17)<br>TAG. NR. : N.A.<br>BFE JOB NR. : 171798 |               |          |   |          |
| COMPANY WITH<br>QUALITY SYSTEM<br>CERTIFIED ACC.TO<br><b>ISO 9001</b>  |               |          | DESCRIPTION<br>REDUCED BORE BALL VALVE<br>FLOATING TYPE - ASME CLASS 800<br>DRAWING NUMBER<br><b>A01BF03R3W171798006A</b> |          |